

**BW** Best Western **PLUS**  
Hood River Inn



i n t h e h e a r t o f t h e c o l u m b i a r i v e r g o r g e





## Location

The Best Western Plus Hood River Inn offers a haven in the heart of the Columbia River Gorge. The Inn is known for rustic elegance and staffed with folks with warm and easy going attitudes. Our location on the banks of the river is an easy and beautiful 60-minute drive from Portland.

## Accommodations

The Inn offers 194 well-appointed guestrooms as well as one, two and three bedroom suites. Many rooms offer river views, private balconies or patios and of course, everything else you would expect from a full-service hotel. Wireless internet is available throughout the Inn free of charge.

## Dining and Entertainment

Hood River's only waterfront dining is available at Riverside. A focus on Italian cuisine in a warm, contemporary atmosphere has made Riverside an area favorite. Riverside's expansive floor to ceiling windows and outside decks allow you to enjoy the area's natural beauty. Our inviting lobby bar Cebu offers casual dining and a truly vibrant social scene. Cebu's full bar features our award-winning wine list as well as 12 local and regional beers on tap.

## Hotel Amenities

We think our outdoor heated pool is one of the most gorgeous in the state. Our fitness center features treadmill and elliptical machines with personal televisions, sauna and indoor spa, changing rooms and lockers. From our private beach area, a riverside path (perfect for strolling or running) connects the Inn with the rest of the Hood River waterfront, marina and downtown Hood River.

## Local Attractions

The Hood River area offers one of the most complete outdoor playgrounds in the world. Hiking, windsurfing, kiteboarding, stand up paddle boarding, cycling, fishing, whitewater rafting, kayaking, golfing, skiing and snowboarding are among just some of the activities available. You should also visit our area's museums, tour the Fruit Loop, or taste some of the area's wine or craft beer.

## Services

The Best Western Plus Hood River Inn offers ample complimentary parking. Starbucks, McDonald's, convenience stores and two service stations are adjacent to the Inn. The Hood River County Visitor's Center is located just two blocks away and can be reached by our riverfront walking path. Our staff, many of whom have been at the Inn for over two decades, are eager to offer you assistance whenever possible.

## Meetings and Events in Hood River

The Best Western Plus Hood River Inn can comfortably accommodate groups up to 400. We offer 8 meeting rooms totaling 15,000 square feet of space perfect for social events, large conferences or smaller board meetings and retreats.



## Hood River Inn

1108 E. Marina Way, Hood River, OR 97031  
(541) 386-2200 fax (541) 386-7295

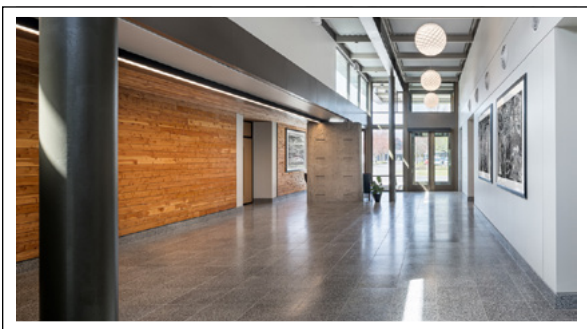
[www.hoodriverinn.com](http://www.hoodriverinn.com) • 1-800-828-7873



# THE COLUMBIA GORGE CONFERENCE CENTER



With our addition to the Gorge Room we now offer up to 15,000 feet of meeting space. Soaring ceilings, nice light and room for vendors are just a few of the features you will enjoy. The Atrium allows for registration, exhibit tables and reception space. The 1890 square foot Trillium Room addition breaks down into two spaces perfect for one large meeting or break-out sessions. And don't forget your attendees get to enjoy entrees from Riverside's delicious catering menu. While this space is new, our commitment to friendly service and great food remains the same. **Call us today. 541-386-8901**



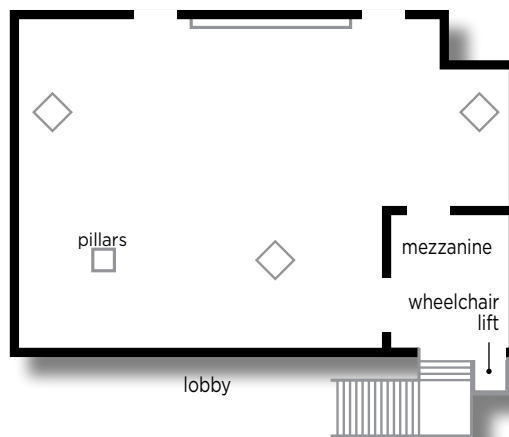
Room	Theater Receptions	Conf. Style	Class Room	U-Shape	Meal	Square Feet	Dimensions
Gorge Room	325	44*	180	60	275	4400	67'x 66'
Trillium Room	179	48*	100	57*	128	1890	62'x31'
Trillium East	112	28	60	35	80	1260	41'x31'
Trillium West	61	24	32	23	40	630	21'x31'
The Atrium	N/A	N/A	N/A	N/A	N/A	1220	45'x21'

\* Indicates Not Recommended—Due to the layout of the rooms, these sets are rather large and are not suitable for meetings.



## COLUMBIA ROOM

The Columbia Room is our second largest room and is located up a wide staircase with access directly from of the lobby (wheelchair elevator access is available as well). The mezzanine entrance is perfect for your registration area. Windows in the back let in natural light and area artwork brightens the space nicely. This room can comfortably accommodate social groups or events for up to 240 people. It's central location allows for quick access to other hotel amenities and guest rooms.



Theater Receptions	Conf. Style	Class Room	U-Shape	Meal	Square Feet	Dimensions
240	36*	150	50	175	3250	61'x46'

\* Indicates Not Recommended—Due to the layout of the rooms, these sets are rather large and are not suitable for meetings.

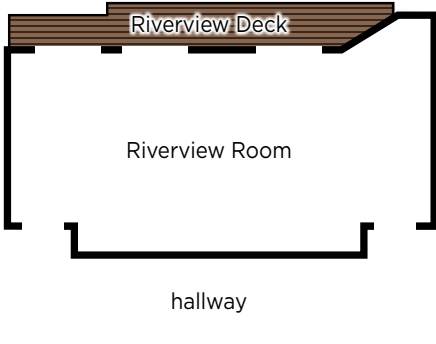




## RIVERVIEW ROOM



The Riverview Room is a great option if you are interested in spectacular views! This room is located in the West Wing and offers two balconies so guests can enjoy uninterrupted sights of the Columbia River, Hood River Bridge and the surrounding bluffs. This is an excellent room for mid-size groups or a breakout room for larger conferences. Perfect for meetings or banquet meals, it can seat up to 100 people.



Theater Receptions	Conf. Style	Class Room	U-Shape	Meal	Square Feet	Dimensions
100	40*	68	45*	64	1250	25'x49'

\* Indicates Not Recommended—Due to the layout of the rooms, these sets are rather large and are not suitable for meetings.

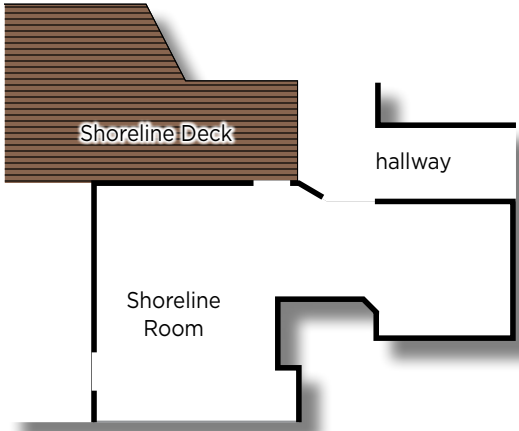




## SHORELINE ROOM, DECK & PATIO



Theater Receptions	Conf. Style	Class Room	U-Shape	Meal	Square Feet	Dimensions
54	28	35	30	90	1000	25'x40'



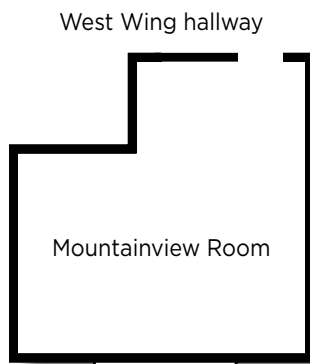
Shoreline is a semi-private area adjacent to Riverside. With a full-service bar and access to an expansive deck and patio overlooking the Columbia River, this room can accommodate up to 54 people for reception or meal functions inside, with seating for an additional 75 people on the outdoor deck.





## MOUNTAINVIEW ROOM

The Mountainview Room is also located in the Inn's West Wing across the hall from the Riverview Room. Expansive windows across the south facing side provide plenty of natural lighting. The room is convenient to the elevator and restrooms, and is just inside the West Wing entrance to the Inn. Both Mountainview and Riverview are easily served by Riverside's main kitchen and Cebu Lounge. The Mountainview Room offers groups of up to 50 people an ideal meeting or dining climate.



Theater Receptions	Conf. Style	Class Room	U-Shape	Meal	Square Feet	Dimensions
50	20	32	24	40	800	28'x29'

## MT HOOD & MT ADAMS ROOMS

The Mt. Adams and Mt. Hood Rooms are ideal for concurrent sessions along with the Columbia Room as they are located on the same level directly in front of the room. They are also accessible via stairs through Riverside restaurant. Individually, each room seats up to 36 people for meals and meeting functions. They also feature built in flat screen TVs.



Theater Receptions	Conf. Style	Class Room	U-Shape	Meal	Square Feet	Dimensions
36	20	21	18	24	375	25'x16'
36	20	21	18	24	375	25'x16'

